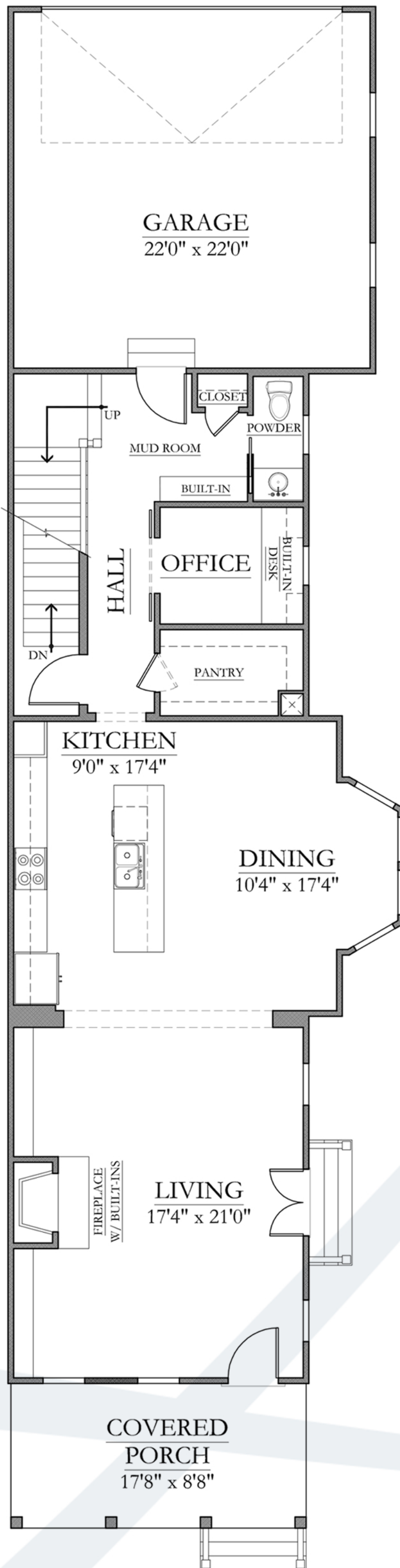




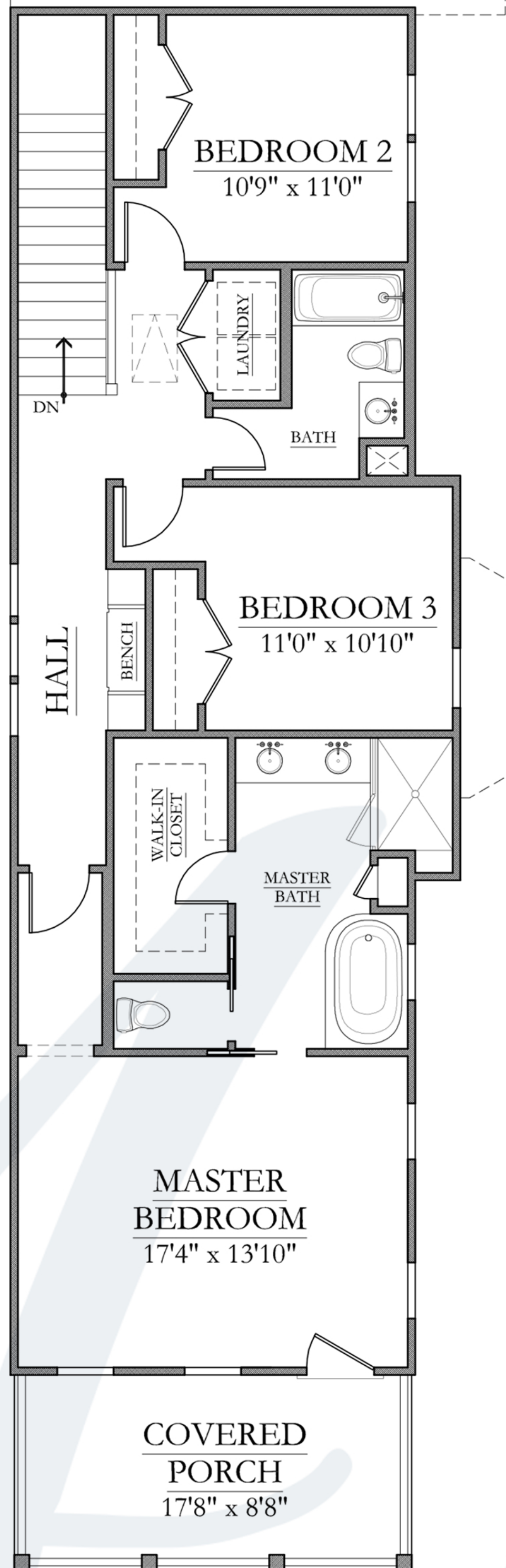
4 BR / 3.5 BA

AREA	
HEATED 1st:	1,164 sq. ft.
HEATED 2nd:	1,058 sq. ft.
TOTAL HEATED:	2,222 sq. ft.
BSMT. HEATED:	862 sq. ft.
UNFINISHED BASEMENT:	153 sq. ft.
FRONT PORCH:	306 sq. ft.
GARAGE sq. ft.:	478 sq. ft.
TOTAL UNDER ROOF:	4,021 sq. ft.

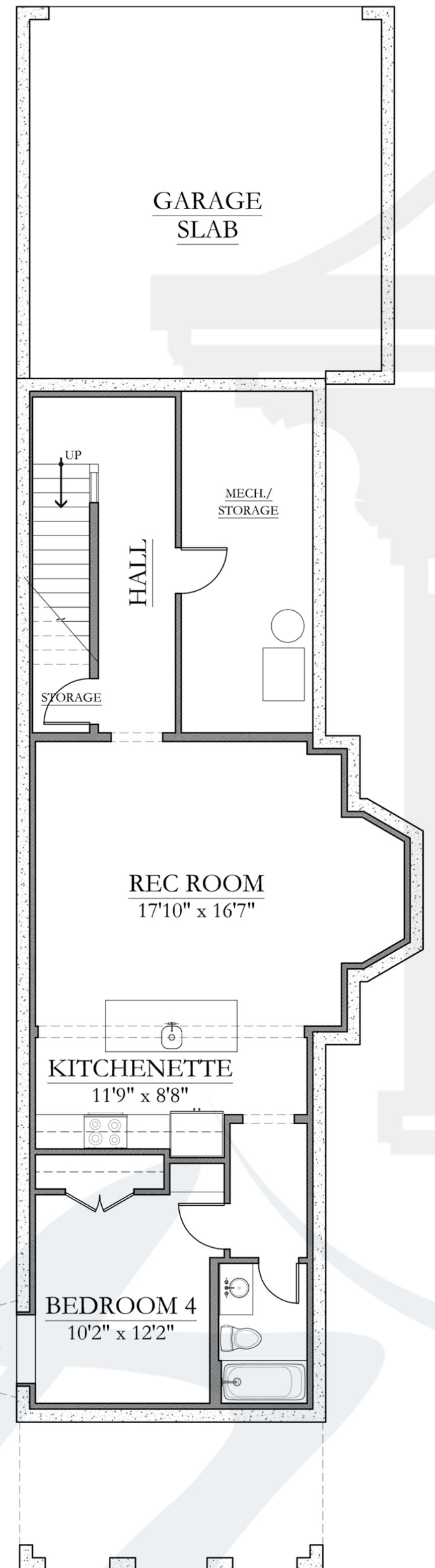
DIMENSIONS	
WIDTH:	23'8"
DEPTH:	91'2"
CEILING 1st:	9'0"
CEILING 1st:	10'0"
CEILING 2nd:	9'0"



FIRST FLOOR



SECOND FLOOR



BASEMENT